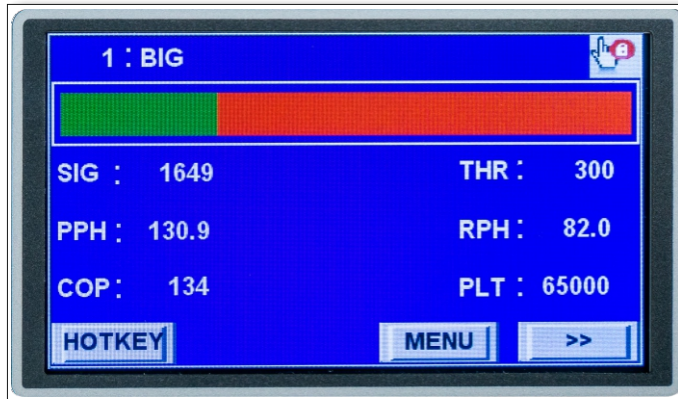
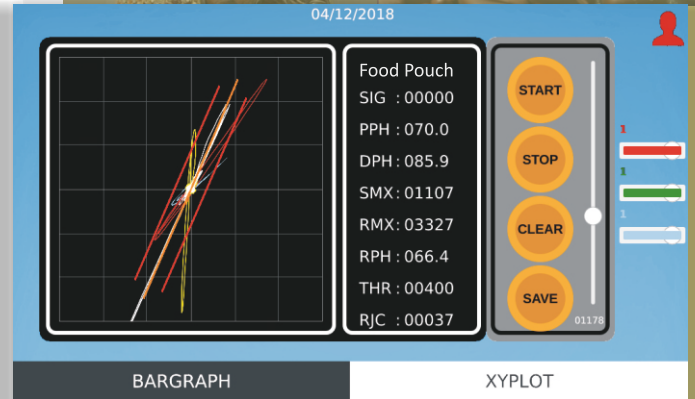


# CONVEYORISED METAL DETECTOR

## METALTRAP SS / GX MODELS



**METALTRAP SS CONVEYOR**



**METALTRAP GX CONVEYOR**



### METALTRAP SS

- Sophisticated digital signal processing to detect minute metal particles in addition to phase Sensitive detection
- Bargraph and numeric display
- 4.5" HMI Display
- Statistical Data with event time stamping
- Diagnostics Available on LCD Display
- Buzzer and LED Indication on Detection of Metal Contamination
- Security Levels Provided
- LCD Bargraph / Numeric Display to Monitor Noise and Signal

### METALTRAP GX

- Very High detection sensitivity
- Multilevel passwords
- 7" Touch Screen Display
- Intuitive graphical user interface
- Real time X-Y plot / Numerical + Graphical Display
- FDA 21 CFR Part 11 compliant
- Ethernet connectivity for data transfer
- Auto Product setting
- Finger print sensor (optional)
- Data can be stored upto 7 years
- SCADA / IIoT connectivity (optional)
- Live metal sample can be identified

Metaltrap SS & GX are our next-generation highly sophisticated system with best in class features. Optimized coil design and operating frequency ensures very high sensitivity with minimal product/environment effect. Designed and manufactured to meet stringent requirement of industrial application.

### SALIENT FEATURES

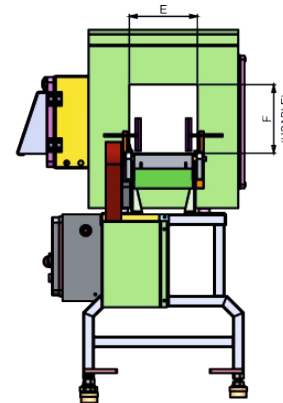
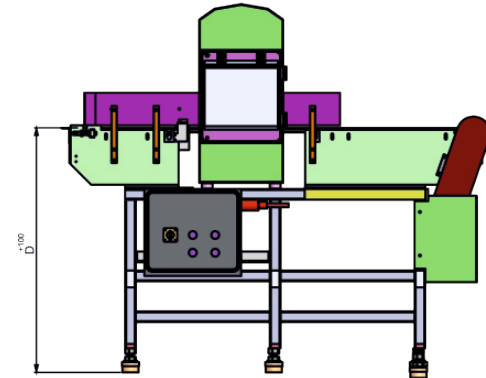
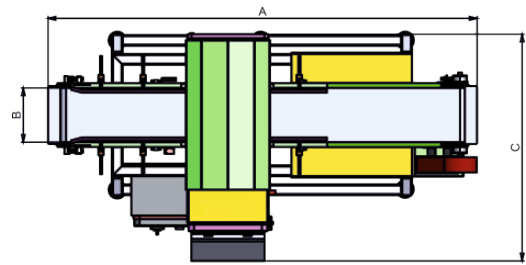
- Auto setting facility
- Sample E - signature
- Product auto-tracking
- Validation using prompt
- Continuous online self check monitoring system
- Digital control and signal processing
- Set parameter data retention on loss of power
- Buzzer on detection of metal contamination
- Validation using prompt
- Digital Gains and Filters for enhanced sensitivity
- Different type of Rejection mechanism depending on type & nature of product / pack
- Reject Time Stamping
- Product Count Stamping



IP 65 option available

### GENERAL SPECIFICATION

- **Construction:** Stainless Steel / Mild Steel
- **Contacts for interlock:** Floating relay
- **Operating temperature:** 0 to 45°C ambient
- **Humidity:** Up to 95% relative humidity
- **Rejection Mechanism:** Conveyor stoppage, Air blow, Pusher, Diverter, conveyor Retractable, Flap
- **Other Attachment:** Various infeed mechanism like bottle separator, stabilizer, turn table etc. available



A	B	C	D	Coil Aperture (opening)	
				E (Width)	F (Height)
1560	75	620	900	100	50 - 250
1770	180	790	900	200	50 - 250
1800	250	1000	850	300	50 - 250
2000	450	1090	750	500	50 - 400
1810	800	1440	750	850	50 - 400
1530	1000	1670	1000	1080	35/50/75/100
1490	1300	1970	850	1380	35/50/75/100
1480	1600	2270	850	1680	35/50/75/100

\* Customized coil sizes can be given on request.  
All dimensions are in millimeter and for reference only, actual dimensions may vary depending upon the application.



**TECHNOFOUR ELECTRONICS PVT. LTD.**

Marketed By

**PT. AIRLOCK INDONESIA JAYA RAYA**  
Kawasan Industri Jababeka Tahap VI  
Jl. East Park Boulevard Block C1B No. 7  
Jatireja - Cikarang Timur, Bekasi  
ZIP 17530, Indonesia

T. +62 21 8932 1222

F. +62 21 8932 1555

E. [sales@airlockintl.co.id](mailto:sales@airlockintl.co.id)

W. [www.airlockintl.co.id](http://www.airlockintl.co.id)

\* Due to continuous development, specifications subject to change without notice.