

# COMPREHENSIVE MAINTENANCE PROGRAM

**Airlock Group, as a Manufacturer is committed to provide the customers with best-in-class services from the rich experience and knowledge gained in the industry.**

**The Airlock Group of Companies are globally recognized and are specialized in providing "GUARANTEED FIELD-PROVEN" solutions for the Bulk Solids Handling in Process Industries.**

**Airlock Comprehensive Maintenance Program (CMP) includes**

- **Annual Maintenance Contract (AMC)**
- **Servicing of all its Manufactured and Globally Reputed Valves with unique Drop-in-Replacement support for continuous plant operation**
- **Servicing of authorized Traded and 3rd Party Products**
- **Spares supported with Warranty and**
- **Site Audit recommendations for Plant Maintenance**

**These services are offered in all the countries operated by Airlock Group in India, Indonesia, Thailand, Philippines and Germany and with its Business Partners in Singapore, Malaysia, Australia, New Zealand and Dubai.**

**Our program includes stocking of commonly used Spares for our Rotary and Diverter Valves including for the Globally Reputed Valves in our warehouse.**

# RECOMMENDED SPARE PARTS FOR DIVERTER VALVE

DTD



**BALL BEARING**



**SLIDE BEARING**



**SHAFT SEAL RING**



**POLYURETHANE  
SEAL**



**SILICONE SEAL**



**O-RINGS**



**SILICONE GLUE**



\*OUR SPARES ARE SUITABLE FOR GLOBALLY REPUTED ROTARY / DIVERTER VALVES

\*ALL OUR SPARES ARE MADE OF HIGH-QUALITY MATERIALS

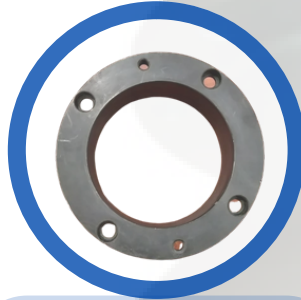
\* PARTS MADE OF FDA APPROVED FOOD GRADE MATERIALS ARE AVAILABLE

# RECOMMENDED SPARE PARTS FOR DIVERTER VALVE

BDV



SEAL



OUTLET PIPE



O-RINGS



BEARING BUSH



SPACER



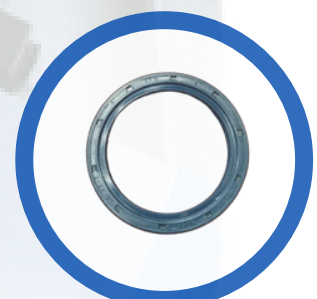
LANTERN RING



CIRCLIP



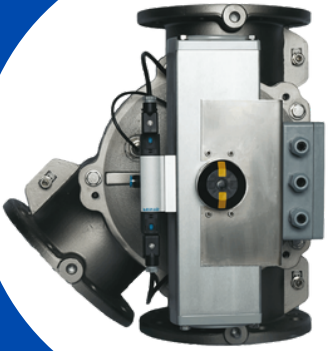
FELT SEAL



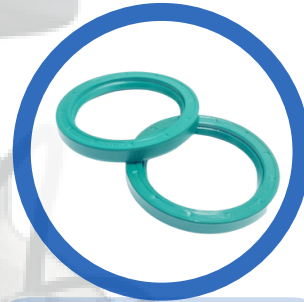
LIP SEAL

# RECOMMENDED SPARE PARTS FOR DIVERTER VALVE

**SDTD**



**BALL BEARING**



**SHAFT SEAL RING**



**O-RINGS**



**SILICONE SEAL**



**SILICONE GLUE**

\*OUR SPARES ARE SUITABLE FOR GLOBALLY REPUTED ROTARY / DIVERTER VALVES

\*ALL OUR SPARES ARE MADE OF HIGH-QUALITY MATERIALS

\* PARTS MADE OF FDA APPROVED FOOD GRADE MATERIALS ARE AVAILABLE

# RECOMMENDED SPARE PARTS FOR ROTARY VALVE

DT & BT



**BALL BEARING**



**LANTERN RING**



**GLAND PACKING**



**LIP SEAL**



**SHAFT KEY**



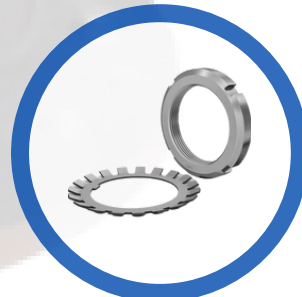
**CHAIN**



**CHAIN LINKS**



**ADJUSTABLE BLADE,  
ALLEN HEAD SCREW &  
WASHER**



**LOCK NUT & LOCK  
WASHER**



\*OUR SPARES ARE SUITABLE FOR GLOBALLY REPUTED ROTARY / DIVERTER VALVES

\*ALL OUR SPARES ARE MADE OF HIGH-QUALITY MATERIALS

\* PARTS MADE OF FDA APPROVED FOOD GRADE MATERIALS ARE AVAILABLE

# RECOMMENDED SPARE PARTS FOR ROTARY VALVE

DT & BT DCSR VER 1



BALL BEARING



LANTERN RING  
DAIRY



LINEAR BALL  
BEARING



SEALING RING



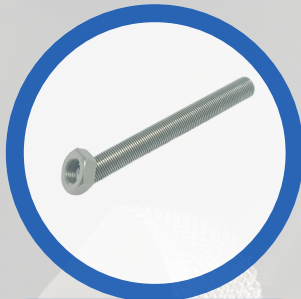
SHAFT KEY



CHAIN



CHAIN LINKS



ADJUSTING  
SCREW & NUT



LOCK NUT & LOCK  
WASHER



\*OUR SPARES ARE SUITABLE FOR GLOBALLY REPUTED ROTARY / DIVERTER VALVES

\*ALL OUR SPARES ARE MADE OF HIGH-QUALITY MATERIALS

\* PARTS MADE OF FDA APPROVED FOOD GRADE MATERIALS ARE AVAILABLE

# RECOMMENDED SPARE PARTS FOR ROTARY VALVE

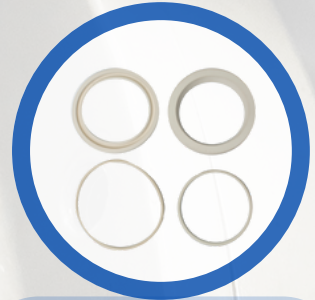
DT & BT DCSR VER 1



DISC SPRING



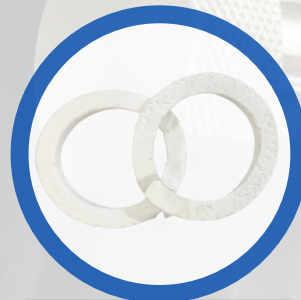
DSS LANTERN RING



DSS LIP SEAL &  
O-RINGS



SHAFT O-RING



GLAND PACKING



CIRCLIP



SERVICE TOOL KIT



\*OUR SPARES ARE SUITABLE FOR GLOBALLY REPUTED ROTARY / DIVERTER VALVES

\*ALL OUR SPARES ARE MADE OF HIGH-QUALITY MATERIALS

\* PARTS MADE OF FDA APPROVED FOOD GRADE MATERIALS ARE AVAILABLE

# RECOMMENDED SPARE PARTS FOR ROTARY VALVE

DT & BT DCSR VER 2



**BALL BEARING**



**SPECIAL DSS  
LANTERN RING**



**LINEAR BALL  
BEARING**



**SEALING RING**



**SHAFT KEY**



**CHAIN**



**CHAIN LINKS**



**CIRCLIP**



**LOCK NUT & LOCK  
WASHER**



\*OUR SPARES ARE SUITABLE FOR GLOBALLY REPUTED ROTARY / DIVERTER VALVES

\*ALL OUR SPARES ARE MADE OF HIGH-QUALITY MATERIALS

\* PARTS MADE OF FDA APPROVED FOOD GRADE MATERIALS ARE AVAILABLE



# RECOMMENDED SPARE PARTS FOR ROTARY VALVE



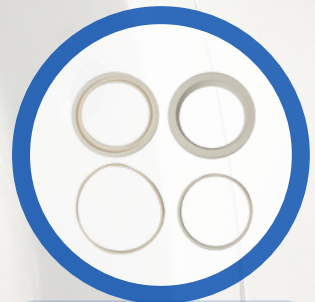
**DT & BT DCSR VER 2**



**PARALLEL KEY**



**END FLOAT SCREW**



**DSS LIP SEAL &  
O-RINGS**



**SERVICE TOOL KIT**



**\*OUR SPARES ARE SUITABLE FOR GLOBALLY REPUTED ROTARY / DIVERTER VALVES**

**\*ALL OUR SPARES ARE MADE OF HIGH-QUALITY MATERIALS**

**\* PARTS MADE OF FDA APPROVED FOOD GRADE MATERIALS ARE AVAILABLE**

# RECOMMENDED SPARE PARTS FOR ROTARY VALVE

DT & BT DCSR VER 1 WITH RIS



CERAMIC BALL BEARING



LANTERN RING DAIRY



LINEAR BALL BEARING



SEALING RING



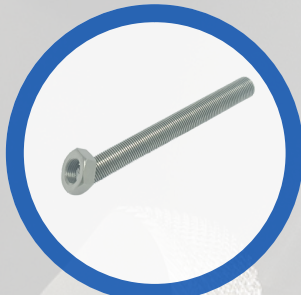
SHAFT KEY



CHAIN



CHAIN LINKS



ADJUSTING SCREW & NUT



LOCK NUT & LOCK WASHER



\*OUR SPARES ARE SUITABLE FOR GLOBALLY REPUTED ROTARY / DIVERTER VALVES

\*ALL OUR SPARES ARE MADE OF HIGH-QUALITY MATERIALS

\* PARTS MADE OF FDA APPROVED FOOD GRADE MATERIALS ARE AVAILABLE

# RECOMMENDED SPARE PARTS FOR ROTARY VALVE

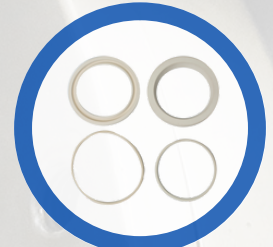
DT & BT DCSR VER 1 WITH RIS



DISC SPRING



DSS LANTERN RING



DSS LIP SEAL & O-RINGS



SHAFT O-RING



GLAND PACKING



RIS SENSOR



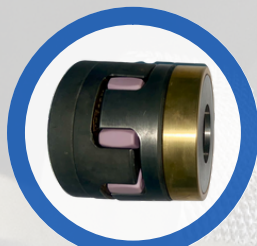
CIRCLIP



SERVICE TOOL KIT



RIS CONTROLLER



ROTEX COUPLING



\*OUR SPARES ARE SUITABLE FOR GLOBALLY REPUTED ROTARY / DIVERTER VALVES

\*ALL OUR SPARES ARE MADE OF HIGH-QUALITY MATERIALS

\* PARTS MADE OF FDA APPROVED FOOD GRADE MATERIALS ARE AVAILABLE

# RECOMMENDED SPARE PARTS FOR ROTARY VALVE



**DT & BT DCSR VER 2 WITH RIS**



**CERAMIC BALL BEARING**



**SPECIAL DSS LANTERN RING**



**LINEAR BALL BEARING**



**SEALING RING**



**SHAFT KEY**



**CHAIN**



**CHAIN LINKS**



**CIRCLIP**



**LOCK NUT & LOCK WASHER**



\*OUR SPARES ARE SUITABLE FOR GLOBALLY REPUTED ROTARY / DIVERTER VALVES

\*ALL OUR SPARES ARE MADE OF HIGH-QUALITY MATERIALS

\* PARTS MADE OF FDA APPROVED FOOD GRADE MATERIALS ARE AVAILABLE

# RECOMMENDED SPARE PARTS FOR ROTARY VALVE

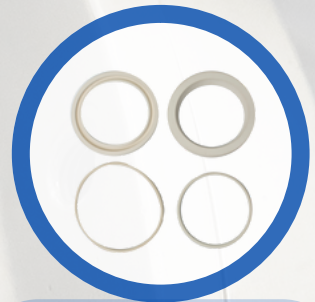
DT & BT DCSR VER 2 WITH RIS



PARALLEL KEY



END FLOAT SCREW



DSS LIP SEAL &  
O-RINGS



RIS SENSOR



RIS CONTROLLER



ROTEX COUPLING



SERVICE TOOL KIT



\*OUR SPARES ARE SUITABLE FOR GLOBALLY REPUTED ROTARY / DIVERTER VALVES

\*ALL OUR SPARES ARE MADE OF HIGH-QUALITY MATERIALS

\* PARTS MADE OF FDA APPROVED FOOD GRADE MATERIALS ARE AVAILABLE

# RECOMMENDED SPARE PARTS



**THIRD PARTY ROTARY /  
DIVERTER VALVES**



**BALL BEARING**



**ROEMING SEAL**



**LINEAR BALL  
BEARING**



**SEALING RING**



**RDS PROBE**



**\*OUR SPARES ARE SUITABLE FOR GLOBALLY REPUTED ROTARY / DIVERTER VALVES**

**\*ALL OUR SPARES ARE MADE OF HIGH-QUALITY MATERIALS**

**\* PARTS MADE OF FDA APPROVED FOOD GRADE MATERIALS ARE AVAILABLE**

# RECOMMENDED SPARE PARTS

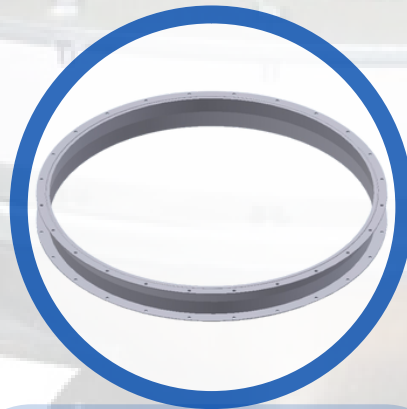
## BIN ACTIVATOR



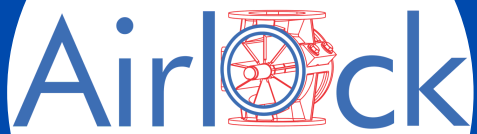
HANGER ARM



HANGER ARM BUSH



FLEXIBLE RUBBER SLEEVE



**Airlock**

# CONTACT US

**AIRLOCK INDIA PVT LTD**

**1/15-8, Ponnandampalayam,  
Arasur - Annur Road,  
Thennampalayam,  
Coimbatore - 641 659,  
Tamil Nadu, India.**

**T: +91 (422) 6678535**

**E: [sales@airlockintl.co.in](mailto:sales@airlockintl.co.in)**

**W: [www.airlockintl.co.in](http://www.airlockintl.co.in)**

**PT. AIRLOCK INDONESIA JAYA RAYA**

**Kawasan Industri Jababeka  
Tahap VI. Jl. East Park  
Boulevard Block C1B No. 7,  
Jatireja**

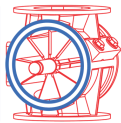
**Cikarang Timur,  
Bekasi, 17530, Indonesia**

**T: +62 21 8932 1222**

**E: [sales@airlockintl.co.id](mailto:sales@airlockintl.co.id)**

**W: [www.airlockintl.co.id](http://www.airlockintl.co.id)**





**Airlock**

# CONTACT US

## **AIR-LOCK CORPORATION LIMITED**

**32 Soi Anamai, Srinakarin Road,  
Suan Luang, Suan Luang,  
Bangkok 10250, Thailand**

**T: +66 2118 6150**

**E: [sales@airlockintl.com](mailto:sales@airlockintl.com)**

**W: [www.airlockcorp.co.th](http://www.airlockcorp.co.th)**

## **AIRLOCK INC.**

**Unit 26-A 26th Floor Rufino Pacific  
Tower, 6784**

**Ayala Avenue, Makati City 1223  
Philippines**

**T: +63 9193049571**

**E: [admin@airlockintl.com.ph](mailto:admin@airlockintl.com.ph)**

## **AIRLOCK BSH UG**

**Friedrich-Vorwerk-Str. 15**

**DE 21255 Tostedt, Germany**

**T: +49 (0) 4263 - 98 04 88 - 0**

**E: [info@airlock.group](mailto:info@airlock.group)**

**W: [www.airlock.group](http://www.airlock.group)**